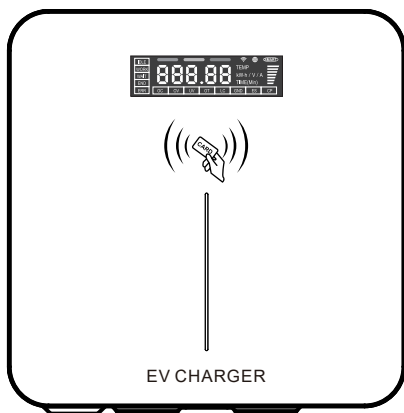




Wallbox EV Charger W2 User Manual



01/Product Overview

1. Display screen

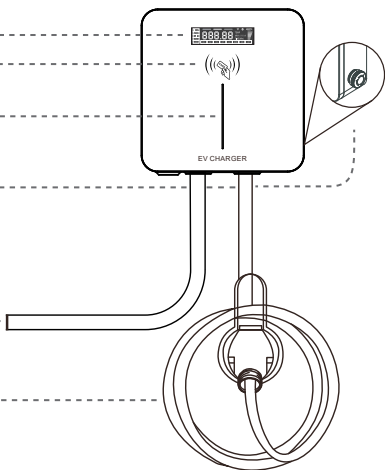
2. RFID area

3. Indicator light

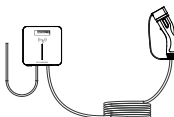
4. Emergency stop button(Optional)

5. Hardwire

6. Charging Plug



What is in the box



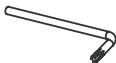
Charging Station × 1



RFID card × 2



Hanging board × 1



Hex key × 1



Hook × 1



M3*6mm × 1

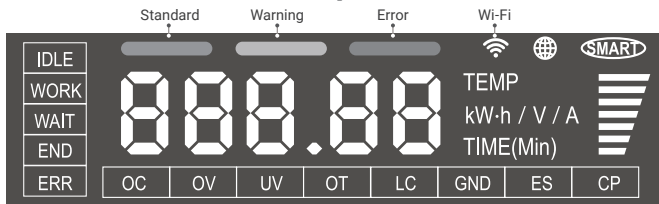


KA4*40mm × 2



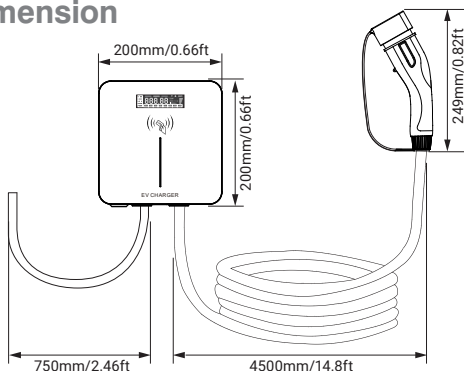
KA4*30mm × 4

02/LED Screen Description



Status	Description		
IDLE	Power On (Available)		
WORK	Insert the charging plug (Charging)		
WAIT	Prepare the charging (Preparing)		
END	Charging Completed (Finished)		
ERR	Charging Error (ERR)		
Warning	Description	Warning	Description
OC	Over Current	LC	Leakage
OV	Over Voltage	GND	Ground
UV	Under Voltage	ES	Emergency stop
OT	Over Temperature	CP	CP Error

03/Dimension



04/Technical Specifications

General			
Power	7KW	11KW	22KW
Voltage	230Vac±10%	380Vac±10%	380Vac±10%
Powe Supply	1 Phase	3 Phase	3 Phase
Current	8~32A	8~16A	8~32A
Power Plug	3 core hardwire	5 core hardwire	5 core hardwire
Charging Cable	3 × 6.0mm ² +0.5mm ²	5 × 2.5mm ² +0.5mm ²	5 × 6.0mm ² +0.5mm ²
Working Environment			
Working Temp.	-25°C~+55°C		
Humidity	5%~95% Non-Condensing		
IP Rate	IP65 for control box and IP54 for Charging plug		
IK Rate	IK08		
Work Altitude	<2000m		
Connectivity			
Bluetooth	Available		
Wi-Fi	Available		
Ethernet	Available		
RFID Card	Available		
OCPP1.6J	Available		
RS485	Available		
4G Module	Optional		
DLB Kit	Optional		
MID Meters	Optional		
Dimension & Package			
Control box	L200 × W200 × H65mm		
Cable Length	4.5 Meters/Customized		
Inner Box	L410 × W280 × H180mm		
Net Weight	3.6kgs (7KW); 3.5kgs (11KW); 4.6kgs (22KW)		
Outer Carton	L580 × W430 × H380mm		

05/Safety Protection



Temperature
Protection



Auto Repair



Efficient
Charging



Protection
Level IP54



RCD



High End
MCU



Under Voltage
Protection



Over Voltage
Protection



Short Circuit
Protection



Earth Leakage
Protection



Lightning
Protection



Over Load
Protection

06/Important Safety Instructions

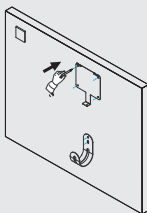
1. Ensure that the equipment is well grounded before powering it on.
2. Keep the charging gun head clean and dry. If it gets dirty, wipe it with a clean and dry cloth.
3. Do not touch the charging gun with your hands while charging.
4. Make sure that the input voltage, frequency, circuit breaker, or fuse of the device and other conditions meet the specifications before powering on the equipment.
5. Insulate all tools as necessary to prevent bare metal parts from touching the metal frame and causing a short circuit.
6. Do not attempt to disassemble, repair or modify the charging pile. If maintenance or modification is necessary, contact the staff. Improper operation can result in equipment damage, water leakage, leakage, and other hazards. This equipment should be installed, adjusted, and serviced by qualified electrical personnel familiar with the construction and operation of this type of equipment and the hazards involved.
7. The equipment should be operated in a clean, constant temperature, and constant humidity environment as much as possible, and the operating environment must not contain volatile gases or flammable gases.
8. Charge with caution during rain and thunder.
9. Follow the instructions strictly during use. Do not allow children to get close to or use the charging pile while charging to avoid injury.
10. After charging is complete, hang the charging gun properly back into the charging gun base. Avoid placing the charging gun head at random or dropping it on the ground to prevent safety accidents.

07/Installation Instructions

WARNING: Turn off the power before you begin the installation. Use extreme caution and follow instructions carefully.

1. Drilling

1



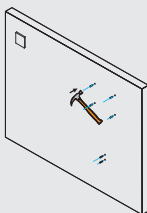
1. Use the Bigger plate and hook to mark the location of the screw holes on the wall where you plan to mount the station and hook.

2



2. Use a hammer drill to make holes in the wall where you marked the locations.

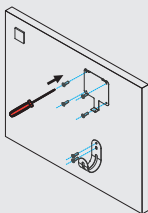
3



3. Hammer the Plastic Expansion Anchors into the holes you drilled.

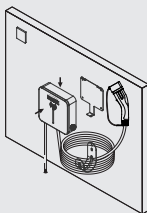
2.Mounting

1



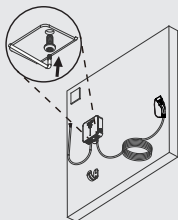
1. Fix the Hanging board to the wall by KA4*30mm screws and Hook to the wall by KA4*40mm screws

2



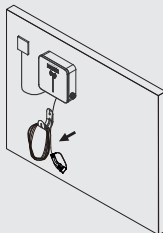
2. Hang the wallbox station on the plate that is now affixed to the wall.

3



3. Lock the bottom anti-sheft by M3*6mm screws

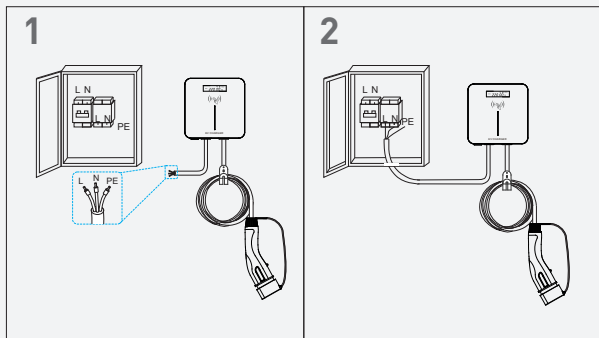
4



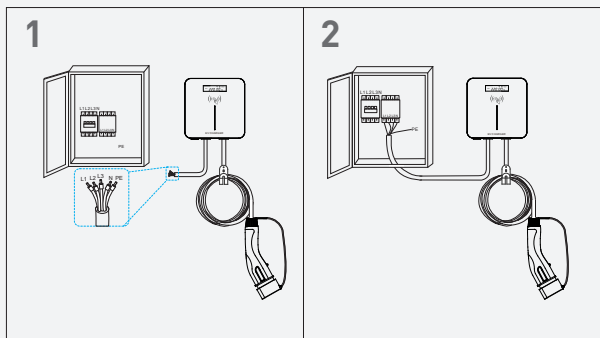
4. Hang the wallbox station on the plate that is now affixed to the wall.

3.Wiring

1.Single Phase: If using a distribution box, the input terminals L, N, and PE correspond respectively to the output terminals L, N, and PE of the circuit breaker.



2.Three Phase: If using a distribution box, the input terminals L1, L2, L3, N, and PE correspond respectively to the output terminals L1, L2, L3, N, and PE of the circuit breaker.



08/Indicator Light Description

Status		Station Interface					
Station Status	Description	Mobile APP	RGB Indicator Light			LED Screen	
			Blue	Green	Red	Icon light on	Display
Power on (Unplugged)	Grounded	Available	Stay on	—	—	IDLE	—
	Ungrounded	Available	Flashing slow	—	—	IDLE & GND	—
Plug in	Preparing	Preparing	—	Stay on	—	WAIT	—
Booking the Charging time	Reserved	Reserved	—	Flashing slow	—	WAIT	—
Charging	Grounded	Charging	—	Flashing slow	—	WORK	—
	Ungrounded	Charging	—	Flashing fast	—	GND	—
Charging Completed	Finished	Finished	—	Stay on	—	END	—
Emergency Stop	Emergency Stop	Faulted	—	—	Flashing slow	WAIT & ES	—
Protection Error	Leakage Error	SuspendedEVSE	—	—	Flashing slow	LC	—
	Over Voltage	SuspendedEVSE	—	—	Flashing slow	OV	—
	Under Voltage	SuspendedEVSE	—	—	Flashing slow	UV	—
	Over Current	SuspendedEVSE	—	—	Flashing slow	OC	—
	Over Temperature	SuspendedEVSE	—	—	Flashing slow	OT	—
	Leakage Self-test Error	Keep Current Status	—	—	Flashing slow	ERR	ERR16
	Relay Error	Keep Current Status	—	—	Flashing slow	ERR	ERR15
	CP Error	Keep Current Status	—	—	Flashing slow	ERR & CP	ERR14
	RN821X Error	Keep Current Status	—	—	Flashing slow	ERR	ERR13
	N12V Error	Keep Current Status	—	—	Flashing slow	ERR	ERR12
	12V Error	Keep Current Status	—	—	Flashing slow	ERR	ERR11

Customer Support

For Technical Assistance Call:

T: 0086-180-254-31819

E: Sales@hysunpower.com

For additional products and information, please visit our website at:
www.hysunpower.com.